

1 LIGHTING PLAN - FIRST FLOOR
1/4" = 1'-0"

GENERAL NOTES:

- A. PROVIDE AFCI TYPE BREAKERS FOR 20A, 1-POLE CIRCUITS SERVING BEDROOMS, KITCHEN, DINING ROOM, HALLWAYS, LAUNDRY ROOM AND LIVING ROOM IN EACH UNIT.
- B. COORDINATE WITH OTHER DISCIPLINES PRIOR TO ROUGH-IN TO AVOID CONFLICT.
- C. PROVIDE DEDICATED NEUTRAL FOR EACH CIRCUIT THAT REQUIRES A NEUTRAL CONDUCTOR.

SHEET NOTES:

- 1. CONNECT LIGHT SWITCH TO CONTROL EXHAUST FAN IN COMBINATION LUMINAIRE/FAN. SEE 1/E3.1.

STAMP:
REVISIONS:
RSA
Mechanical and Electrical Consulting Engineers
670 West Firwood Lane, Suite 200
Anchorage, AK 99503
(907) 276-0521
191 Swanson Avenue
Wasilla, Alaska 99654
(907) 357-1521 (Corporate No.: AECC547)

TRAHO
ARCHITECTS P.S.
1400 N. 10th Avenue, Suite A - Anchorage, Alaska 99502
P: (907) 452-0969 WWW.TRAHO.COM

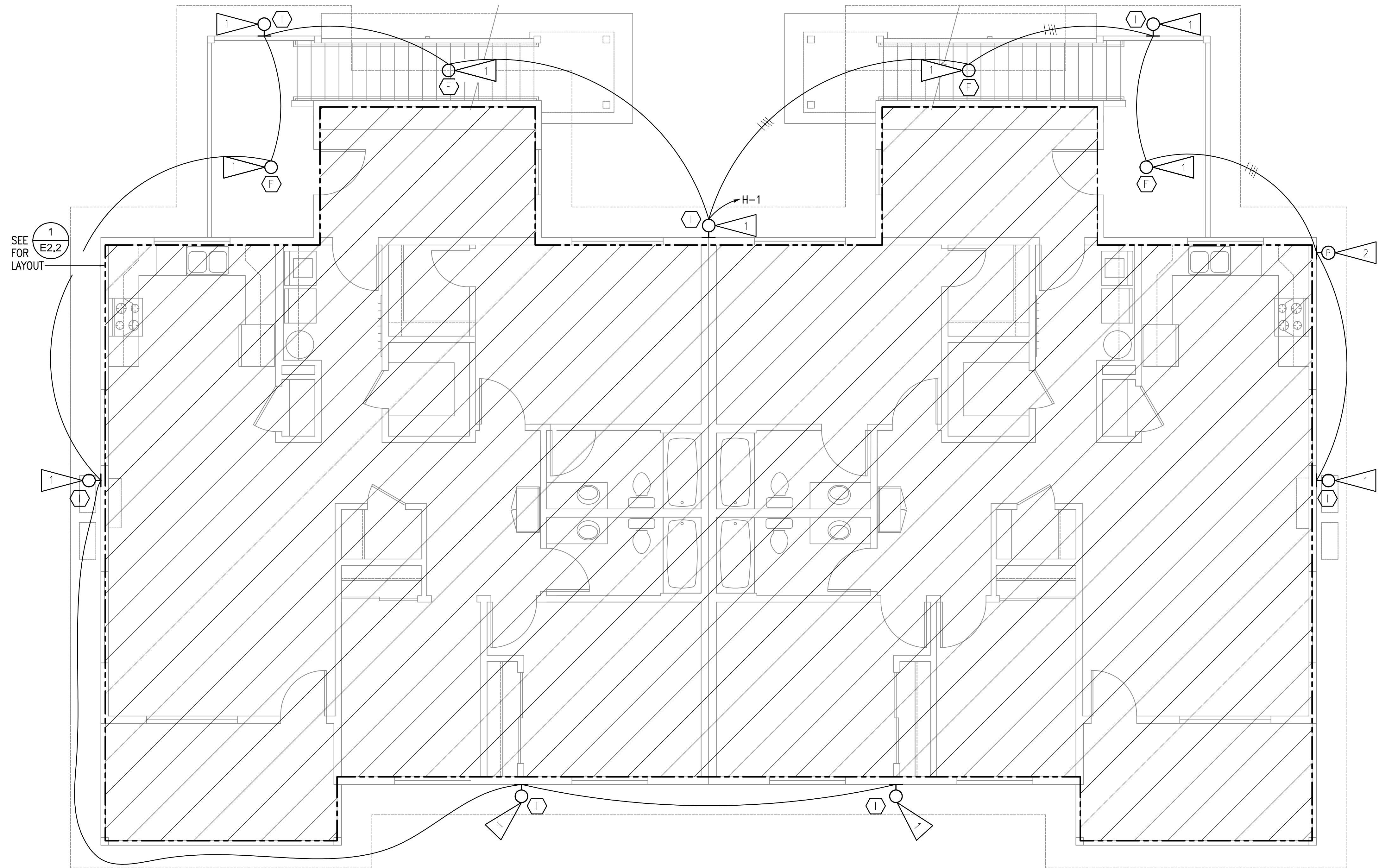
Craig Tract 18 4-plex
TLINGIT-HAIDA REGIONAL HOUSING AUTHORITY
CRAIG, ALASKA

SHEET TITLE:
LIGHTING
FIRST FLOOR

COPYRIGHT RESERVED. ALL PARTS OF THIS DRAWING ARE THE EXCLUSIVE PROPERTY OF TRAH ARCHITECTS, P.S. NO PARTS MAY BE REPRODUCED OR TRANSMITTED IN ANY FORM OR BY ANY MEANS WITHOUT EXPRESS WRITTEN PERMISSION OF TRAH ARCHITECTS, P.S.
AUTOMATED PLOT DATE:
DRAWING DATE:
May 21, 2018
JOB NO.
L8030
SCALE:
AS SHOWN
SHEET NUMBER

DESIGN DEVELOPMENT- NOT FOR CONSTRUCTION

E2.2



1 LIGHTING PLAN - SECOND FLOOR
1/4" = 1'-0"

GENERAL NOTES:

- A. SEE SHEET E2.2 FOR GENERAL NOTES THAT APPLY TO THIS SHEET.

SHEET NOTES:

1. EXTERIOR BUILDING-MOUNTED LUMINAIRE TO BE CONTROLLED VIA BUILDING MOUNTED PHOTOCELL.
2. PROVIDE PHOTOCELL FOR CONTROL OF EXTERIOR BUILDING-MOUNTED LUMINAIRES.

STAMP:
REVISIONS:
RSA
Mechanical and
Electrical Consulting
Engineers
670 West Firwood Lane, Suite 200
Anchorage, AK 99503
(907) 278-0521
191 Swanson Avenue
Wasilla, Alaska 99654
(907) 357-1521 (Corporate No.: AECC54)

TRAHO
ARCHITECTS P.S.
1400 N. 10th AVENUE, SUITE A - TAVARIA, WA 98042
P: (360) 452-0069 F: (360) 452-0578 WWW.TRAHO.COM

Craig Tract 18 4-plex
TLINGIT-HAIDA REGIONAL HOUSING AUTHORITY
CRAIG, ALASKA

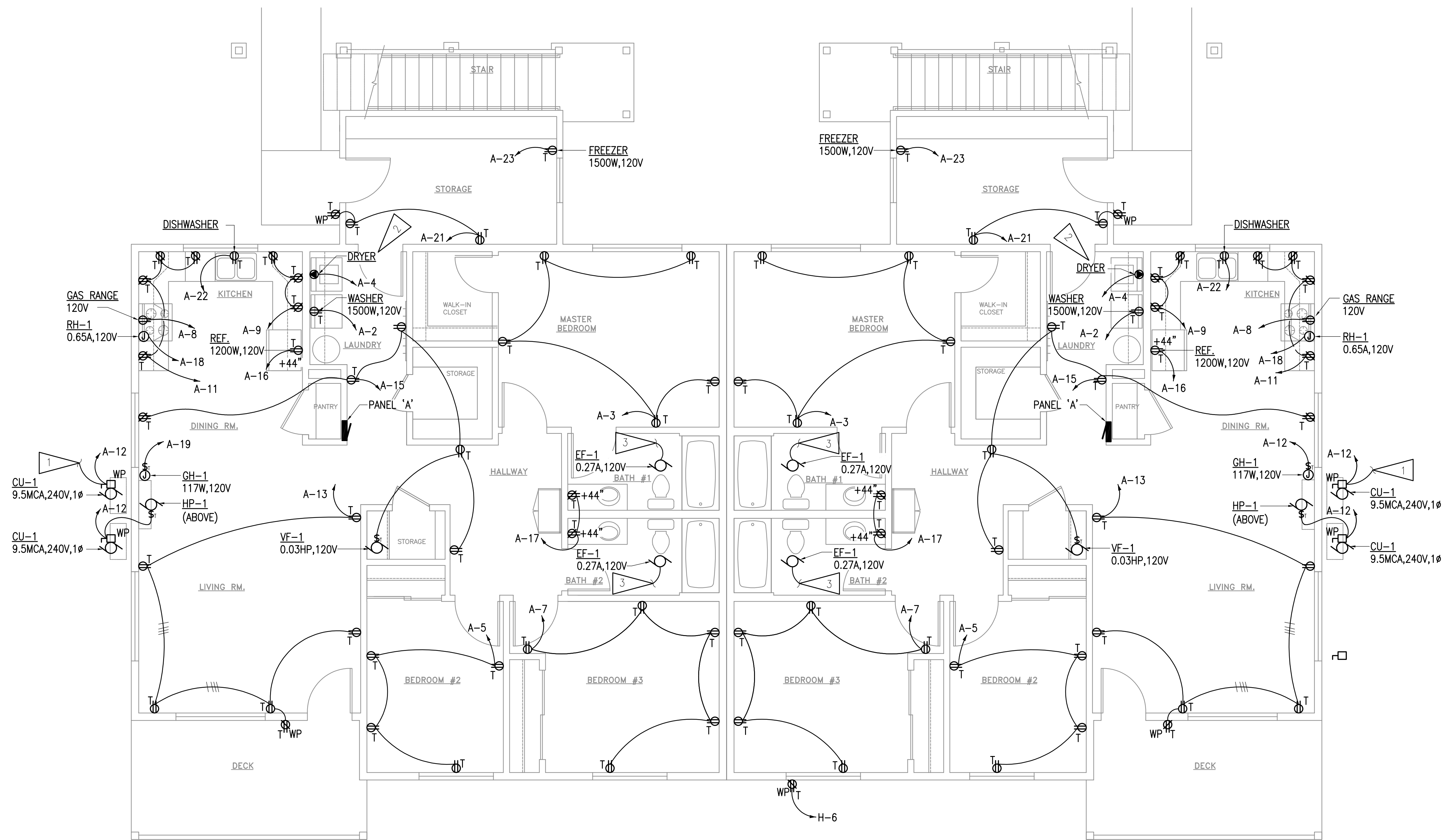
SHEET TITLE:
LIGHTING
SECOND FLOOR

COPYRIGHT RESERVED. ALL PARTS OF THIS DRAWING ARE THE
EXCLUSIVE PROPERTY OF TRAH ARCHITECTS P.S. AND SHALL
NOT BE REPRODUCED OR TRANSMITTED IN ANY FORM OR BY ANY
MEANS WITHOUT THE EXPRESS WRITTEN PERMISSION OF TRAH ARCHITECTS P.S.

AUTOMATED PLOT DATE:
DRAWING DATE:
May 21, 2018
JOB NO.
L8030
SCALE:
AS SHOWN
SHEET NUMBER

DESIGN DEVELOPMENT-NOT FOR CONSTRUCTION

E2.3



1 POWER PLAN - FIRST FLOOR
1/4" = 1'-0"

GENERAL NOTES:

- A. PROVIDE AFCI TYPE BREAKERS FOR 20A, 1-POLE CIRCUITS SERVING BEDROOMS, KITCHEN, DINING ROOM, HALLWAYS, LAUNDRY ROOM AND LIVING ROOM IN EACH UNIT.
- B. PROVIDE CONDUIT, WIRES AND OTHER APPURTENANCES AS REQUIRED TO PROVIDE POWER TO MECHANICAL EQUIPMENT, RECEPTACLES, ETC.
- C. MOUNT RECEPTACLES ABOVE KITCHEN COUNTER AT +44" AFF, TYPICAL. COORDINATE WITH ARCHITECTURAL PRIOR TO ROUGH-IN.
- D. COORDINATE WITH OTHER DISCIPLINES PRIOR TO ROUGH-IN TO AVOID CONFLICT.
- E. PROVIDE DEDICATED NEUTRAL FOR EACH CIRCUIT THAT REQUIRES A NEUTRAL CONDUCTOR.

SHEET NOTES:

- 1. PROVIDE CONNECTION TO CORRESPONDING HP-1 IN SECOND FLOOR UNIT. COORDINATE WITH MECHANICAL.
- 2. DRYER: 5KW, 240V. PROVIDE NEMA 6-30R RECEPTACLE, #10/3 WITH GND.
- 3. CONNECT EXHAUST FAN IN COMBINATION LUMINAIRE/FAN TO BE SWITCHED WITH BATHROOM LIGHTS.

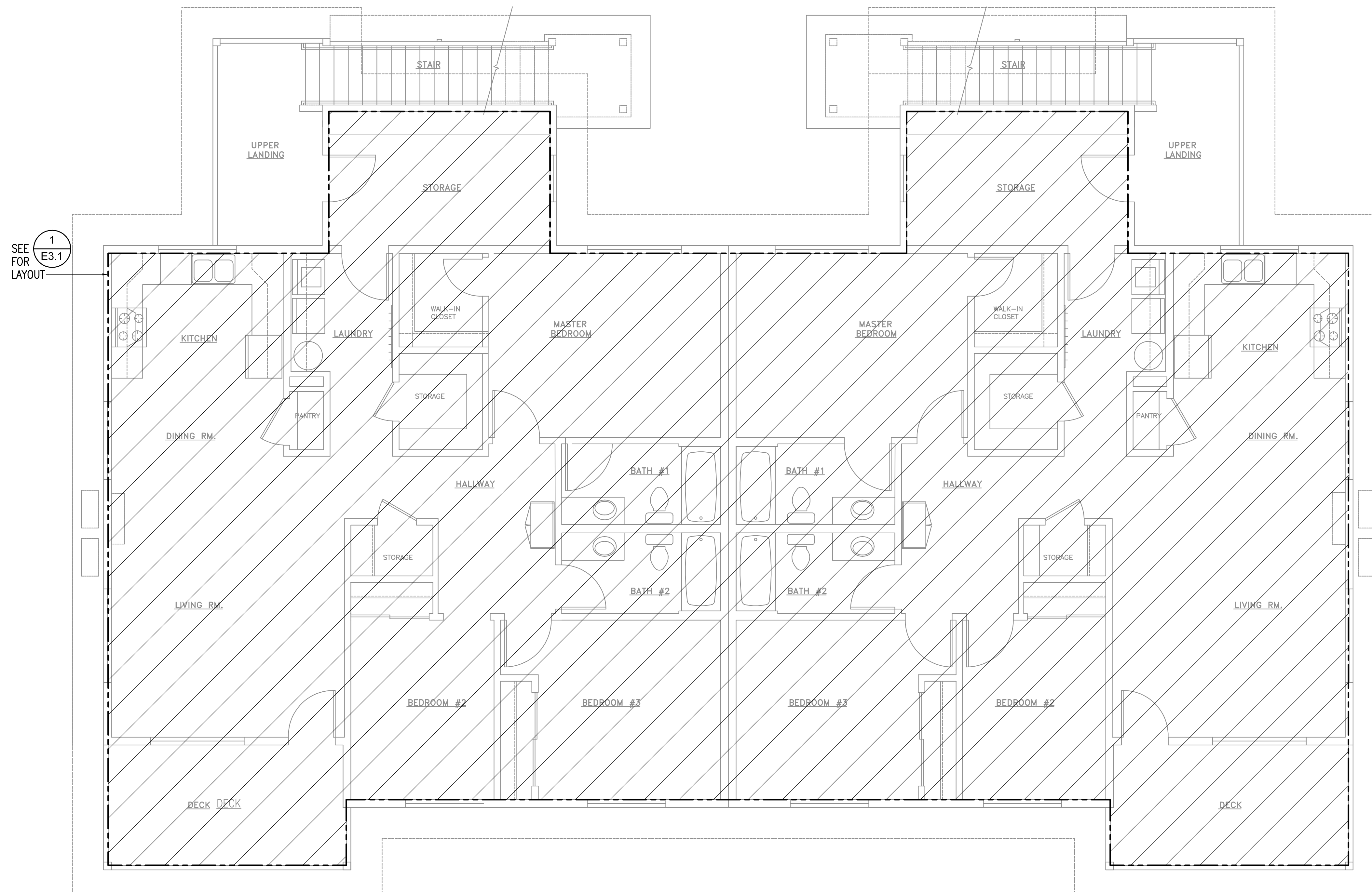
STAMP:
REVISIONS:
RSA
Mechanical and Electrical Consulting Engineers
670 West Firwood Lane, Suite 200
Anchorage, AK 99503
(907) 278-0521
191 Swanson Avenue
Wasilla, Alaska 99654
(907) 357-1521 (Corporate No.: AECC54)

TRAHO
ARCHITECTS P.S.
1400 N. 10th AVENUE, SUITE A - ANCHORAGE, ALASKA 99502
P: (907) 452-0969 WWW.TRAHO.COM

Craig Tract 18 4-plex
TLINGIT-HAIDA REGIONAL HOUSING AUTHORITY
CRAIG, ALASKA

SHEET TITLE:
POWER FIRST FLOOR
AUTOMATED PLOT DATE:
DRAWING DATE:
May 21, 2018
JOB NO.:
L8030
SCALE:
AS SHOWN
SHEET NUMBER

DESIGN DEVELOPMENT - NOT FOR CONSTRUCTION



1 POWER PLAN - SECOND FLOOR
1/4" = 1'-0"

GENERAL NOTES:

- A. SEE SHEET E3.1 FOR GENERAL NOTES THAT APPLY TO THIS SHEET.

STAMP:
REVISIONS:
RSA
Mechanical and Electrical Consulting Engineers
670 West Firwood Lane, Suite 200
Anchorage, AK 99503
(907) 278-0521
191 Swanson Avenue
Wasilla, Alaska 99654
(907) 357-1521 (Corporate No.: AECC547)

TRAHO
ARCHITECTS P.S.
1400 N. 10th AVENUE, SUITE A - TONKA, ALASKA 99502
P: (907) 452-0069 F: (907) 452-0578 WWW.TRAHO.COM

Craig Tract 18 4-plex
TLINGIT-HAIDA REGIONAL HOUSING AUTHORITY
CRAIG, ALASKA

SHEET TITLE:
POWER SECOND FLOOR
AUTOMATED PLOT DATE:
DRAWING DATE:
May 21, 2018
JOB NO.
L8030
SCALE:
AS SHOWN
SHEET NUMBER

DESIGN DEVELOPMENT - NOT FOR CONSTRUCTION

E3.2